

Ratcliff Tract of Lafayette County



250.00 Acres / \$750,000.00

The Ratcliff farm is a 250 acre tract with 60 acres pasture and the rest is loaded with timber. The open area has over 1/4 mile of road frontage on Hwy 160. A roadway leads all the way through the property for good access. A beautiful pond is close to the area used for a catch pen. The wooded area is a mix of hardwood and pine. This is a great food source and habitat for all area game. This property originally adjoined the old IP Game Reserve before it dissolved. This tract has everything to offer. It can be a great homesite or getaway. Only minutes from a country store and maybe 10 minutes to Springhill or Bradley. This property is priced right at \$ 750,000.



 <p>1-844-GO-PINEY www.pineywoodsrealestate.com</p>	<p>jay@pineywoodsrealestate.com Office: 1-844-467-4639 Cell: 1-318-455-0373 Fax: 1-318-539-2731</p> <p>Jay Hearnberger P.O. BOX 792 Springhill, LA 71075</p> 
--	---

Ratcliff Tract of Lafayette County Aerial



PINEY WOODS
REAL ESTATE®

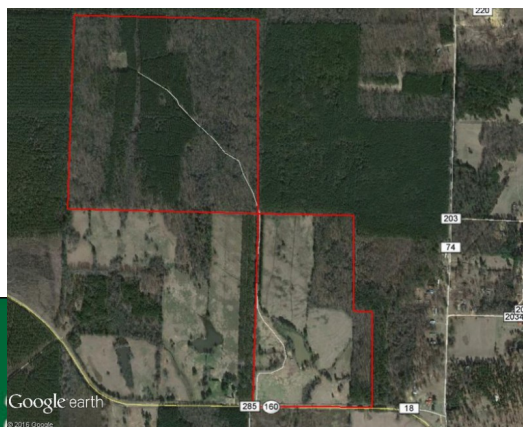
1-844-GO-PINEY
www.pineywoodsrealestate.com

jay@pineywoodsrealestate.com
Office: 1-844-467-4639
Cell: 1-318-455-0373
Fax: 1-318-539-2731

Jay Hearnberger
P.O. BOX 792
Springhill, LA 71075



Ratcliff Tract of Lafayette County Images



PINEY WOODS
REAL ESTATE®

1-844-GO-PINEY
www.pineywoodsrealestate.com

Jay Hearnberger
P.O. BOX 792
Springhill, LA 71075





PINEY WOODS
REAL ESTATE®

1-844-GO-PINEY
www.pineywoodsrealestate.com

jay@pineywoodsrealestate.com
Office: 1-844-467-4639
Cell: 1-318-455-0373
Fax: 1-318-539-2731

Jay Hearnberger
P.O. BOX 792
Springhill, LA 71075



Ratcliff Tract of Lafayette County Details

Hwy 160
Taylor, Arkansas 0
Lafayette County

Longitude: 0.00000000
Latitude: 0.00000000

Electricity: 0 - 0.4 miles;
Gas: 0 - 0.4 miles
Waste: None
Water: Community
Services: Telephone

Activities: Hunting
Atv
Horseback Riding
Family

Acres: 250.00

Fencing: YES
Trees: Heavy
Waterfront: Pond
Adjacent Owner: Private
Road Surface: Blacktop/Asphalt
Terrain: Varied





1-844-GO-PINEY
www.pineywoodsrealestate.com

jay@pineywoodsrealestate.com
Office: 1-844-467-4639
Cell: 1-318-455-0373
Fax: 1-318-539-2731

Jay Hearnberger
P.O. BOX 792
Springhill, LA 71075



Ratcliff Tract of Lafayette County Vicinity (Zoomed Out)



PINEY WOODS
REAL ESTATE®

1-844-GO-PINEY
www.pineywoodsrealestate.com

jay@pineywoodsrealestate.com
Office: 1-844-467-4639
Cell: 1-318-455-0373
Fax: 1-318-539-2731

Jay Hearnberger
P.O. BOX 792
Springhill, LA 71075



Ratcliff Tract of Lafayette County Vicinity (Zoomed In)



1-844-GO-PINEY
www.pineywoodsrealestate.com

jay@pineywoodsrealestate.com
Office: 1-844-467-4639
Cell: 1-318-455-0373
Fax: 1-318-539-2731

Jay Hearnberger
P.O. BOX 792
Springhill, LA 71075

