

## Historic Butler House



**0.64 Acres / \$89,900.00**

The Butler House in Springhill, Louisiana is a century old historic landmark. This is the original site of Dr. Butler's medical office in the early 1900s. The facility has been used commercially as an attorney's office and health care facility. The highest and best use would remain commercial although this would serve as a great home for those that appreciate historic things in a town much like Mayberry on Andy Griffith. The lot is 25,410 sf and the central air and heated portion of the house is 2,279 sf. The extra large porches with hanging swing is 499 sf. There is an extra large cement parking area. The bank, post office, city hall, and grocery store are within walking distance. This is a great buy at \$ 89,900.



 <p><b>1-844-GO-PINEY</b> www.pineywoodsrealestate.com</p>	<p>jay@pineywoodsrealestate.com Office: 1-844-467-4639 Cell: 1-318-455-0373 Fax: 1-318-539-2731</p> <p><b>Jay Hearnberger</b> P.O. BOX 792 Springhill, LA 71075</p> 
--	---

## Historic Butler House Aerial



**PINEY WOODS**  
REAL ESTATE®

**1-844-GO-PINEY**  
[www.pineywoodsrealestate.com](http://www.pineywoodsrealestate.com)

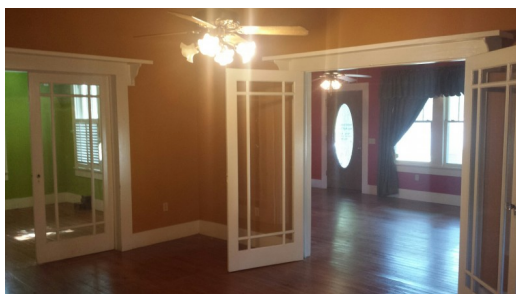
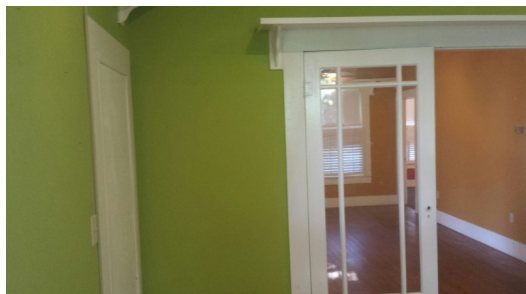
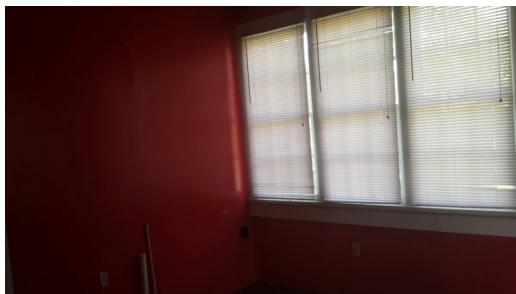
[jay@pineywoodsrealestate.com](mailto:jay@pineywoodsrealestate.com)  
Office: 1-844-467-4639  
Cell: 1-318-455-0373  
Fax: 1-318-539-2731

**Jay Hearnberger**  
P.O. BOX 792  
Springhill, LA 71075





## Historic Butler House Images



**1-844-GO-PINEY**  
www.pineywoodsrealestate.com

jay@pineywoodsrealestate.com  
Office: 1-844-467-4639  
Cell: 1-318-455-0373  
Fax: 1-318-539-2731

**Jay Hearnberger**  
P.O. BOX 792  
Springhill, LA 71075








**PINEY WOODS**  
REAL ESTATE®

**1-844-GO-PINEY**  
www.pineywoodsrealestate.com

jay@pineywoodsrealestate.com  
Office: 1-844-467-4639  
Cell: 1-318-455-0373  
Fax: 1-318-539-2731

**Jay Hearnberger**  
P.O. BOX 792  
Springhill, LA 71075





## Historic Butler House Details

206 Butler Street  
Springhill, Louisiana 71075  
Webster Parish

---

Longitude: -93.46479459  
Latitude: 33.00587359

---

Electricity: 0 - 0.4 miles;  
Gas: 0 - 0.4 miles  
Waste: City Sewer  
Water: City  
Services: Cable  
Satellite  
Telephone  
Dsl

---

Activities: Family

---

Acres: 0.64

---

Fencing: NO  
Trees: Moderate  
Waterfront: None  
Adjacent Owner: Private  
Road Surface: Blacktop/Asphalt  
Terrain: Varied



	<p>jay@pineywoodsrealestate.com Office: 1-844-467-4639 Cell: 1-318-455-0373 Fax: 1-318-539-2731</p>
	<p><b>Jay Hearnberger</b> P.O. BOX 792 Springhill, LA 71075</p>

## Historic Butler House Vicinity (Zoomed Out)



**PINEY WOODS**  
REAL ESTATE®

**1-844-GO-PINEY**  
[www.pineywoodsrealestate.com](http://www.pineywoodsrealestate.com)

[jay@pineywoodsrealestate.com](mailto:jay@pineywoodsrealestate.com)  
Office: 1-844-467-4639  
Cell: 1-318-455-0373  
Fax: 1-318-539-2731

**Jay Hearnberger**  
P.O. BOX 792  
Springhill, LA 71075





## Historic Butler House Vicinity (Zoomed In)



 <p><b>1-844-GO-PINEY</b> www.pineywoodsrealestate.com</p>	<p>jay@pineywoodsrealestate.com Office: 1-844-467-4639 Cell: 1-318-455-0373 Fax: 1-318-539-2731</p> <p><b>Jay Hearnberger</b> P.O. BOX 792 Springhill, LA 71075</p> 
--	---